



*Créateur de
flexibilité*



GECITECH specializes in the manufacture of flexible hoses and fittings for the food, chemical, pharmaceutical, biotechnology and cosmetic industries.

We have a full range of flexible silicone, rubber and thermoplastics hoses (PFA, PTFE, MFA, etc.) as well as stainless steel fittings. This range meets all our customers' needs.

All our products undergo many testing requirements and controls throughout the production cycle, meeting international standards such as FDA, USP, BfR, Atex, European Regulation 1935/2004, etc. Our company is also ISO 9001 certified since 2005.



GECITECH can meet any customer specification with our pioneering R&D department staffed with highly qualified technicians and engineers who design and improve co-engineering demands from customers.

This expertise enables the development of patented innovative products.

Our products are manufactured and assembled in our workshop by qualified and trained staff with the latest technologies.



Our production site in Mions with over 20000 m².

GSI® 75 NT and NTP

SILICONE



Fully extruded silicone, textile reinforcements and HR* stainless steel wiring. NT version white platinum cured. NTP version natural platinum cured.

PRODUCT HIGHLIGHTS

NT and NTP

- Autoclavable hose.
- High working temperature.
- Good vacuum capability.
- High flexibility and robustness.

NT Version

- Recommended for food and pharmaceutical applications.

NTP Version

- Recommended for food, pharmaceutical and biotechnology applications.
- Cytotoxicity, Haemolysis, European Pharmacopoeia.

- Available from ND 8 to 102mm (0.315 to 4 inches) **GSI® 75 NT and NTP**
- Working pressure from 6 to 20 bar (87 to 290 PSI)
- Working temperature range from -60°C to +180°C (-76°F to 356°F)
- Standard manufacturing length 5.70m (18.7 feet)

Phthalate free

FDA

BfR

Regulation 1935/2004



GSI® 75 NTP

USP Class VI

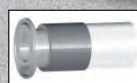
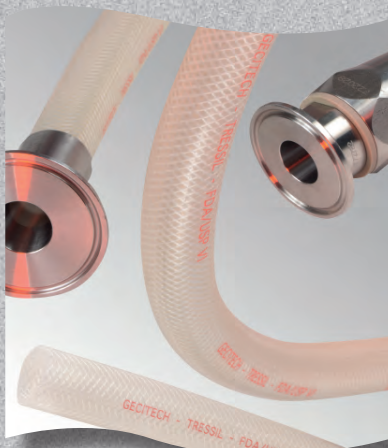
Assembly options

316L stainless steel swaged fittings are monoblocs (no welds) in accordance with the NRS® design (Non Retention System). Hoses can be also supplied with reusable MSP® fittings (up to ND51). Many types of fittings are also available upon request (SMS, DIN, CLAMP, RJT, ISS, FIL, GAS, NPT, JIC, FLANGES, etc.).

*HR: Highly resistant against stress corrosion cracking.

TRESSIL®

SILICONE



Fully extruded silicone, textile braid reinforcement, platinum cured.

PRODUCT HIGHLIGHTS

- Very flexible hose for the transfer of food, pharmaceuticals and biotechnology, even at high temperature.
- Autoclavable hose.

- Available from ND 3 to 32mm (0.12 to 1.26 inches).
- Working pressure from 4 to 15 bar (58 to 218 PSI).
- Working temperature range from -60°C to +180°C (-76°F to 356°F).
- Standard length 25m (82 feet), 10m (33 feet) from ND 25 (1 inch).
- Other lengths available on request.
- No vacuum capability.

Phthalate free

FDA

USP Class VI

BfR



Assembly options

The 316L stainless steel swaged fittings are monoblocs (no welds) in accordance with the NRS® design (Non Retention System). The hose can be also supplied with reusable VNRS® fittings (from DN6). Many types of fittings are also available upon request (SMS, DIN, CLAMP, RJT, ISS, FIL, GAS, NPT, JIC, FLANGES, etc.).

SPIRSIL®

SILICONE



Fully extruded platinum cured silicone with stainless steel wiring HR* embedded in the wall.

PRODUCT HIGHLIGHTS

- Hose for food, pharmaceutical and biotechnology fluid return.
- Autoclavable hose.

- Available from ND 13 to 51mm (0.5 to 2 inches).
- Working temperature range from -60 to +130°C (-76° to 266°F).
- Standard length 5.70m (18.7 feet)

Phthalate free

FDA

USP Class VI

BfR



Assembly options

The 316L stainless steel swaged fittings are monoblocs (no welds) in accordance with the NRS® design (Non Retention System). Many types of fittings are also available upon request (SMS, DIN, CLAMP, RJT, ISS, FIL, GAS, NPT, JIC, FLANGES, etc.).

*HR: Highly resistant against stress corrosion cracking.

SILICONE TUBES



Extruded silicone tube, platinum cured.

PRODUCT HIGHLIGHTS

- 60/70/80 shores
- Long manufacturing lengths and wide range of diameters.
- Autoclavable tube.

Phthalate free FDA USP Class VI BFR

POLYSIL®

SILICONE / PFA



White smooth PFA, textile reinforcements and stainless steel wiring HR* embedded in the silicone wall. Outer surface is white platinum cured silicone.

PRODUCT HIGHLIGHTS

- Ideal for the transfer of food, pharmaceutical, biotechnology and cosmetic products, and all aggressive products even at high temperatures.
- Autoclavable hose.
- No product migration through the hose wall.
- Easy to clean.
- Good vacuum capability.

- Available from ND 13 to 63mm (0.51 to 2.5 inches).
- Working pressure 10 bar (145 PSI).
- Working temperature range from -30 to +130°C (-22 to +266°F).
- Standard length 5.70m (18.7 feet)

Phthalate free FDA USP Class VI BFR Regulation 1935/2004

Assembly options

The 316L stainless steel swaged fittings are monoblocs (no welds) in accordance with the NRS® design (Non Retention System). The hose can be also supplied with the reusable MSP® fitting (please contact us). Many types of fittings are also available upon request (SMS, DIN, CLAMP, RJT, ISS, FIL, GAS, NPT, JIC, FLANGES, etc.).

*HR: Highly resistant against stress corrosion cracking.



NRS

MSP

SILFLON®

SILICONE / PTFE



Smooth PTFE bore, stainless steel braid, textile reinforcements and stainless steel wiring HR* from ND 13 (0.51 inches). White silicone cover.

PRODUCT HIGHLIGHTS

- For the transfer of all food products, including oily and fatty products, liquid chemical products and gas (except melted down alkaline metal and fluorinated gas) and permanent steam.
- Excellent thermal protection.

- Available from ND 6 to 25mm (0.25 to 1 inch).
- Working pressure from 40 to 120 bar (580 to 1740 PSI).
- Working temperature range from -50 to +230°C (-58 to +446°F).
- Standard manufacturing length 22m (72.2 feet). (Except ND 25mm (1") which is 5.75m (18.9 ft).
- No vacuum capability

Phthalate free FDA USP Class VI Regulation 1935/2004

Assembly options

The 316L stainless steel swaged fittings are monoblocs (no welds) in accordance with the NRS® design (Non Retention System). Many types of fittings are also available upon request (SMS, DIN, CLAMP, RJT, ISS, FIL, GAS, NPT, JIC, FLANGES, etc.).

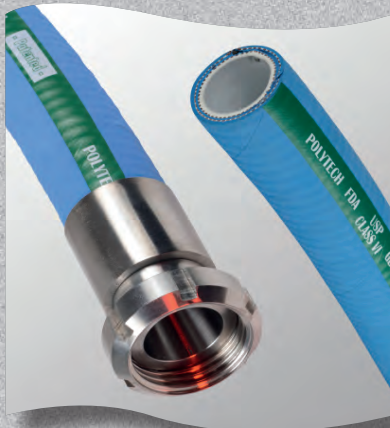
*HR: Highly resistant against stress corrosion cracking.



NRS

POLYTECH®

PFA / EPDM



NRS



Reusable ferrules

White smooth PFA bore with textile ply and galvanized steel wires embedded in the wall. Outer surface is blue EPDM (other colours available upon request).

PRODUCT HIGHLIGHTS

● Highly resistant hose for the transfer of food, pharmaceutical, cosmetic and chemical products.

- Available from ND 13 to 100mm (0.51 to 4 inches).
- Working pressure 10 bar (145 PSI).
- Working temperature range from -30 to +130°C* (-22 to +266°F).
- Standard manufacturing length 20m (66 feet).

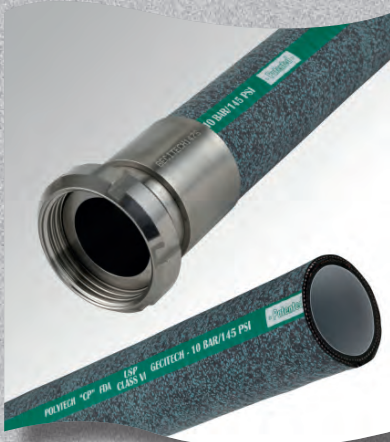
Phtalate free	FDA	USP Class VI	BFR	Regulation 1935/2004	BNIC
---------------	-----	--------------	-----	----------------------	------

Assembly options

The 316L stainless steel swaged fittings are monoblocs (no welds) in accordance with the NRS® design (Non Retention System). The hose can be also supplied with reusable fittings and ferrules. Many types of fittings are also available upon request (SMS, DIN, CLAMP, RJT, ISS, FIL, GAS, NPT, JIC, FLANGES, etc.).

POLYTECH® CP (Carbone Pharma)

PFA / EPDM



NRS

White PFA, ultra smooth and non-adherent, textile ply and galvanized steel wires embedded in the wall. Blue/black marbled finish and antistatic.

PRODUCT HIGHLIGHTS

● Robust hose for the transfer of food, pharmaceutical and chemical products using bipolar solvents in explosive areas.

- Available from ND 13 to 100mm (0.51 to 4 inches).
- Working pressure 10 bar (145 PSI).
- Working temperature range from -30 to +130°C * (-22 to +266°F).
- Standard manufacturing length 20m (66 feet).

Phtalate free	FDA	USP Class VI	BFR	Ex
---------------	-----	--------------	-----	----

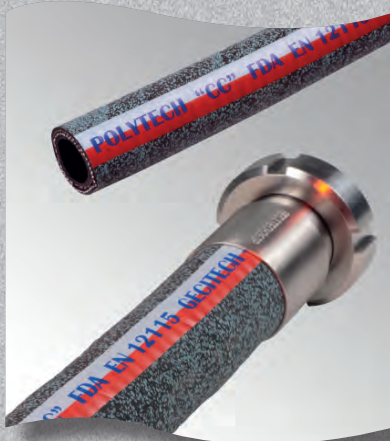
Atex validated by INERIS in accordance with the certification N° 21795.2X/09 (Assembly by GECITECH).

Assembly options

The 316L stainless steel swaged fittings are monoblocs (no welds) in accordance with the NRS® design (Non Retention System). Many types of fittings are also available upon request (SMS, DIN, CLAMP, RJT, ISS, FIL, GAS, NPT, JIC, FLANGES, etc.).

POLYTECH® CC (Carbone Chimie)

PFA / EPDM



NRS

Black PFA smooth antistatic with textile ply and galvanized steel wires embedded in the wall. Blue/black marbled finish and antistatic.

PRODUCT HIGHLIGHTS

● Robust hose for the transfer of all products including the most aggressive fluids in explosive areas.

- Available from ND 13 to 100mm (0.51 to 4 inches).
- Working pressure 10 bar (145 PSI).
- Working temperature range from -30 to +130°C* (-22 to +266°F).
- Standard manufacturing length 20m (66 feet).

Phtalate free	FDA	USP Class VI	BFR	Ex
---------------	-----	--------------	-----	----

Atex validated by INERIS in accordance with the certification N° 21795.2X/09 (Assembly by GECITECH).

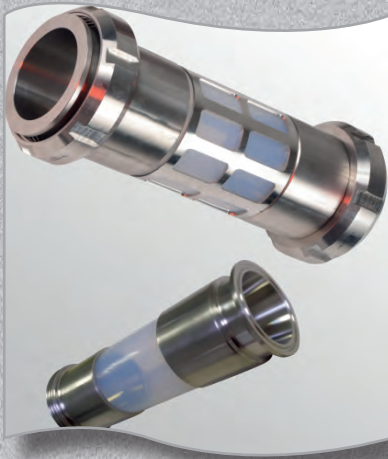
Assembly options

The 316L stainless steel swaged fittings are monoblocs (no welds) in accordance with the NRS® design (Non Retention System). Many types of fittings are also available upon request (SMS, DIN, CLAMP, RJT, ISS, FIL, GAS, NPT, JIC, FLANGES, etc.).

* For temperature requirements above 100°C (212°F), please contact us.

VIEWLINE®

MFA



NRS

Fluorinated thermoplastic, translucent to view the transfer product.

PRODUCT HIGHLIGHTS

- Material shatter resistant, chemically inert to avoid contamination of the transferred product. Suitable for food, pharmaceutical, cosmetic and chemical applications. It is also tasteless and odorless.
- Can be externally reinforced with a stainless steel safety guard according to the ratio pressure / temperature applications.
- Can be assembled in longer length for tank level applications.

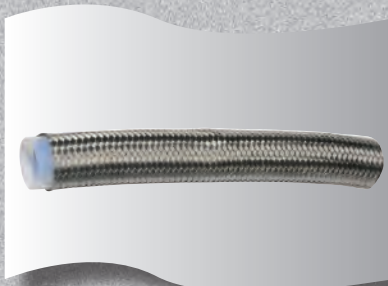
- Available from ND 25 to 100mm (1 to 4 inches).
- Working pressure from 4 to 8 bar (58 to 116 PSI).
- Working temperature range from -40 to +150°C (-40 to 302°F).
- Available in longer length for diameter 20x24 for level gauge (replacement of the glass level gauge).

Phthalate free FDA USP Class VI BFR Regulation 1935/2004

Assembly options

The 316L stainless steel swaged fittings are monoblocs (no welds) in accordance with the NRS® design (Non Retention System). Many types of fittings are also available upon request (SMS, DIN, CLAMP, RJT, ISS, FIL, GAS, NPT, JIC, FLANGES, etc.).

SMOOTH PTFE BORE HOSE WITH STAINLESS STEEL BRAID



NRS

Smooth PTFE bore hose. Outer surface reinforced by a stainless steel braid in 304L material.

PRODUCT HIGHLIGHTS

- Ideal for the transfer of chemical products, steam even at high temperature and pressure.
- Non-stick quality which allows a good flow of the transferred liquid with minimum pressure loss.

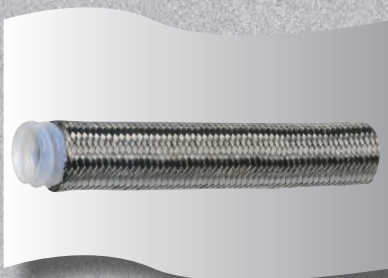
- Available from ND 5 to 26mm (0.2 to 1 inch).
- Working pressure from 68 to 205 bar (986 to 2973 PSI).
- Working temperature range from -50 to +200°C (-58 to +392°F).
- No vacuum capability.

Phthalate free FDA

Assembly options

The 316L stainless steel swaged fittings are monoblocs (no welds) in accordance with the NRS® design (Non Retention System). Many types of fittings are also available upon request (SMS, DIN, CLAMP, RJT, ISS, FIL, GAS, NPT, JIC, FLANGES, etc.).

PTFE CONVOLUTED HOSE WITH STAINLESS STEEL BRAID



NRS

PTFE convoluted hose. Outer surface reinforced by a stainless steel braid in 304L material.

PRODUCT HIGHLIGHTS

- Ideal for the transfer of aggressive products in dynamic application.

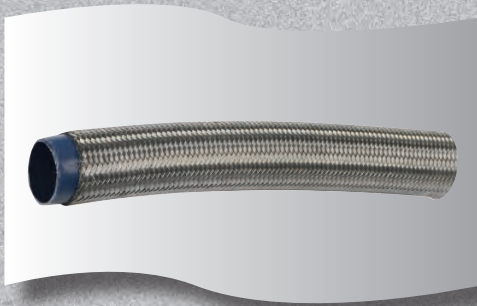
- Available from ND 6 to 100mm (0.24 to 4 inches).
- Working pressure from 12 to 170 bar (174 to 2466 PSI).
- Working temperature range from -50 to +200°C (-58 to +392°F).
- For vacuum applications, contact us.

Phthalate free FDA

Assembly options

The 316L stainless steel swaged fittings are monoblocs (no welds) in accordance with the NRS® design (Non Retention System). Many types of fittings are also available upon request (SMS, DIN, CLAMP, RJT, ISS, FIL, GAS, NPT, JIC, FLANGES, etc.).

SMOOTH PTFE BORE HOSE WITH STAINLESS STEEL BRAID CARBON-LOADED



Smooth PTFE bore hose carbon-loaded. Outer surface reinforced by a stainless steel braid in 304L material.

PRODUCT HIGHLIGHTS

- Ideal for the transfer of chemical products, solvents and steam both at high temperature and pressure in explosive areas.
- The non-stick quality of the PTFE allows good flow of the conveyed liquids with minimum pressure loss.

- Available from ND 5 to 26mm (0.2 to 1 inch).
- Working pressure from 68 to 205 bar (986 to 2973 PSI).
- Working temperature range from -50 to +200°C (-58 to +392°F).



NRS

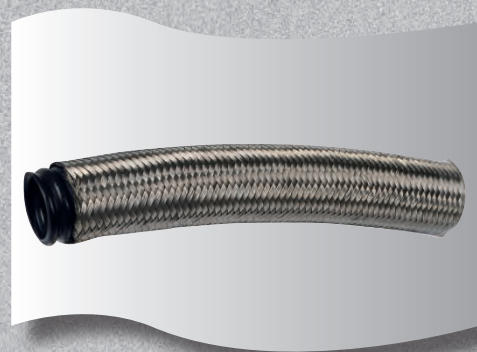


Atex validated by INERIS in accordance with the certification n°87830-1/07 (Assembly by GECITECH).

Assembly options

The 316L stainless steel swaged fittings are monoblocs (no welds) in accordance with the NRS® design (Non Retention System). Many types of fittings are also available upon request (SMS, DIN, CLAMP, RJT, ISS, FIL, GAS, NPT, JIC, FLANGES, etc.).

PTFE CONVOLUTED HOSE CARBON-LOADED



PTFE convoluted carbon-loaded. Outer surface reinforced by a stainless steel braid in 304L material.

PRODUCT HIGHLIGHTS

- Used for applications requiring temperature consistency.
- Hose with high flexibility and resistance to solvents and other chemical agents even in explosive areas.

- Available from ND 6 to 100mm (0.24 to 4 inches).
- Working pressure from 12 to 170 bar (174 to 2466 PSI).
- Working temperature range from -50 to +200°C (-58 to +392°F).
- For vacuum applications, contact us.



NRS

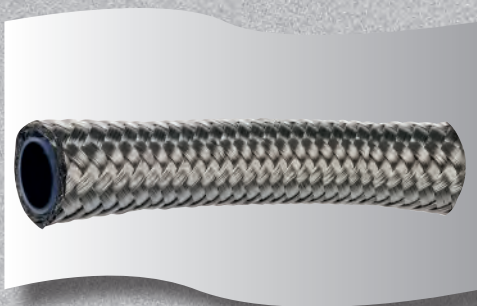


Atex validated by INERIS in accordance with the certification n°87830-1/07 (Assembly by GECITECH).

Assembly options

The 316L stainless steel swaged fittings are monoblocs (no welds) in accordance with the NRS® design (Non Retention System). Many types of fittings are also available upon request (SMS, DIN, CLAMP, RJT, ISS, FIL, GAS, NPT, JIC, FLANGES, etc.).

PTFE HOSE VERY HIGH PRESSURE



Smooth PTFE carbon-loaded. Outer surface reinforced by a stainless steel braid in 304L material high tenacity.

PRODUCT HIGHLIGHTS

- PTFE hose with high robustness for the transfer of all types of food or chemical products.
- Antistatic tube.
- Good mechanical properties with minimum pressure loss.

- Available from ND 6 to 26mm (0.24 to 1 inch).
- Working pressure 350 bar (5076 PSI)
- Working temperature range from -60 to +200°C (-76 to +392°F).



NRS



Atex validated by INERIS in accordance with the certification n°87830-1/07 (Assembly by GECITECH).

Assembly options

The 316L stainless steel swaged fittings are monoblocs (no welds) in accordance with the NRS® design (Non Retention System). Many types of fittings are also available upon request (SMS, DIN, CLAMP, RJT, ISS, FIL, GAS, NPT, JIC, FLANGES, etc.).

DEPOTAL®

EPDM



White EPDM with textile ply reinforcement and galvanized steel wires embedded in the wall. Outer surface blue EPDM.

PRODUCT HIGHLIGHTS

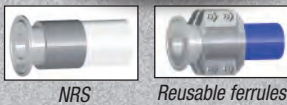
- Very robust hose recommended for all types of food products except for oily and fatty products.
- Ideal for resisting ground abrasion.
- Good vacuum capability.

- Available from ND 20 to 203mm (0.79 to 8 inches).
- Working pressure from 6 to 10 bar (87 to 145 PSI).
- Working temperature range from -30 to +120°C (-22 to +248°F).
- Standard manufacturing length 40m (131 feet).

Phtalate free	FDA	BfR	Regulation 1935/2004
---------------	-----	-----	----------------------

Assembly options

The 316L stainless steel swaged fittings are monoblocs (no welds) in accordance with the NRS® design (Non Retention System). The hose can be also supplied with reusable fittings and ferrules. Many types of fittings are also available upon request (SMS, DIN, CLAMP, RJT, ISS, FIL, GAS, NPT, JIC, FLANGES, etc.).



BLUTECH®

BUTYL



Clear Butyl with textile ply reinforcement and galvanized steel wiring embedded in the wall. Outer surface blue Butyl.

PRODUCT HIGHLIGHTS

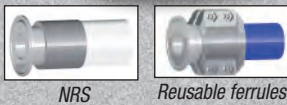
- Very flexible hose recommended for the transfer of beverage, beer and distilled drinks up to 96% alcohol.
- Will not contaminate the products transferred. Tasteless and odorless.
- Good vacuum capability.

- Available from ND 19 to 102mm (0.75 to 4 inches).
- Working pressure from 5 to 8 bar (72.5 to 116 PSI).
- Working temperature range from -30 to +80°C (-22 to 176°F).
- Standard manufacturing length 40m (131 feet).

Phtalate free	FDA	BfR	Regulation 1935/2004
---------------	-----	-----	----------------------

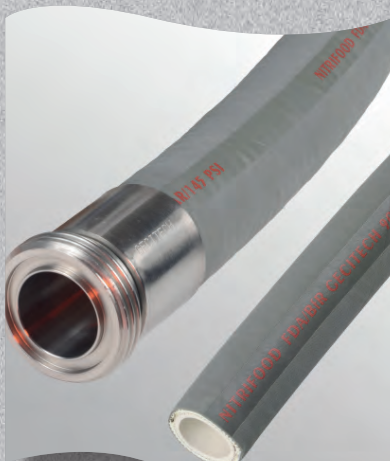
Assembly options

The 316L stainless steel swaged fittings are monoblocs (no welds) in accordance with the NRS® design (Non Retention System). The hose can be also supplied with fittings and reusable ferrules. Many types of fittings are also available upon request (SMS, DIN, CLAMP, RJT, ISS, FIL, GAS, NPT, JIC, FLANGES, etc.).



NITRIFOOD®

NITRILE



White NBR with textile ply reinforcement and galvanized steel wiring embedded in the wall. Outer surface light grey Chloroprene.

PRODUCT HIGHLIGHTS

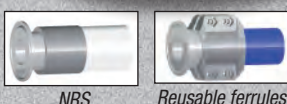
- Robust hose recommended mostly for oily and fatty products.
- Ideal for resisting ground abrasion.
- Good vacuum capability.

- Available from ND 10 to 102mm (0.4 to 4 inches).
- Working pressure 10 bar (145 PSI).
- Working temperature range from -30 to +90°C (-22 to 194°F).
- Standard manufacturing length 40m (131 feet).

Phtalate free	FDA	BfR	Regulation 1935/2004	 <small>Gecitech assembly</small>
---------------	-----	-----	----------------------	---

Assembly options

The 316L stainless steel swaged fittings are monoblocs (no welds) in accordance with the NRS® design (Non Retention System). The hose can be also supplied with reusable fittings and ferrules. Many types of fittings are also available upon request (SMS, DIN, CLAMP, RJT, ISS, FIL, GAS, NPT, JIC, FLANGES, etc.).



MAXIFOOD®

EPDM



NRS

White EPDM with synthetic plies reinforcement, high tenacity. Outer surface grey smooth synthetic rubber.

PRODUCT HIGHLIGHTS

- Very robust hose without wire reinforcement.
- Ideal for resisting ground abrasion.
- Recommended for processing most food products, except oily and fatty products.
- Can be used for metal detectors.

- Available from ND 25 to 76mm (1 to 3 inches).
- Working pressure 10 bar (145 PSI).
- Working temperature range from -35 to +100°C (-31 to +212°F).
- Standard manufacturing length 40m (131 feet).
- For vacuum applications, contact us.

Phthalate free

FDA

BFR

Assembly options

The 316L stainless steel swaged fittings are monoblocs (no welds) in accordance with the NRS® design (Non Retention System). The hose can be also supplied with reusable fittings and ferrules for some diameters (contact us). Many types of fittings are also available upon request (SMS, DIN, CLAMP, RJT, ISS, FIL, GAS, NPT, JIC, FLANGES, etc.).

VAPROCESS®

EPDM



NRS

White EPDM with synthetic reinforcement plies. Outer surface micro perforated blue EPDM.

PRODUCT HIGHLIGHTS

- Very flexible hose without wire reinforcement.
- Recommended for processing most food products, except oily and fatty products.
- Ideal cleaning hose reel applications (except slaughterhouses).
- Caution: no continuous steam application.

- Available from ND 13 to 76mm (0.5 to 3 inches)
- Working pressure 7 bar at 170°C and 20 bar at 95°C (102 PSI at +338°F and 290 PSI at 203°F)
- Working temperature range from -40 to +170°C (-40 to 338°F).
- Standard length manufacturing 40m (131 feet).
- No vacuum capability.

Phthalate free

FDA

Assembly options

The 316L stainless steel swaged fittings are monoblocs (no welds) in accordance with the NRS® design (Non Retention System). Many types of fittings are also available upon request (SMS, DIN, CLAMP, RJT, ISS, FIL, GAS, NPT, JIC, FLANGES, etc.).

VTA®

BUTYL



NRS

White Butyl with steel reinforcement braid embedded in the wall. Outer surface micro perforated grey Butyl.

PRODUCT HIGHLIGHTS

- Very flexible and robust hose improving food products in high pressure and non-operator safety.
- A versatile hose compatible with most food products in high pressure and non-permanent steam.
- Long manufacturing lengths.

- Available from ND 13 to 38mm (0.5 to 1.5 inches).
- Working pressure 8 bar at 170°C and 30 bar at 95°C (116 PSI at +338°F and 435 PSI at 203°F), depending on duration. Contact us for temperature requirements over 95°C (203°F).
- Working temperature range from -40 to +170°C (-40° to +338°F).
- Standard manufacturing length 60m (196.8 feet).

Phthalate free

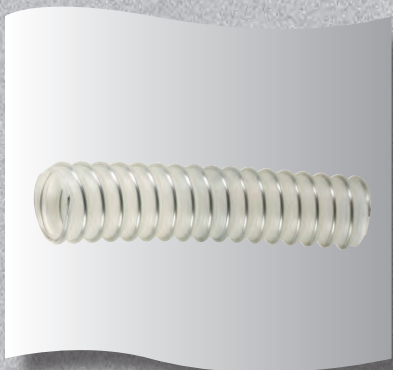
FDA

BFR

Assembly options

The 316L stainless steel swaged fittings are monoblocs (no welds) in accordance with the NRS® design (Non Retention System). Many types of fittings are also available upon request (SMS, DIN, CLAMP, RJT, ISS, FIL, GAS, NPT, JIC, FLANGES, etc.).

POLYURETHANE REINFORCED GECIFLEX PU/AL/EX HOSE



100% translucent and antistatic polyurethane polyester with stainless steel wire without halogens or plasticizers.

PRODUCT HIGHLIGHTS

- Suction and powder discharge hose for food, pharmaceutical and cosmetic industries requiring a food contact certification
- High resistance to UV and ozone.
- for explosive areas.

- Available from ND 38 to 100mm (1.5 to 4 inches).
- Working temperature range from -40 to +90°C (-40 to 194°F).
- Standard manufacturing length 10m (32.8 feet).

Phthalate free

FDA



Atex validated by INERIS in accordance with the certification n°24576/12 (Assembly by GECITECH).

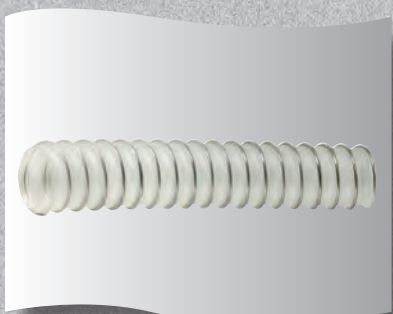


NRS

Assembly options

The 316L stainless steel swaged fittings are monoblocs (no welds) in accordance with the NRS® design (Non Retention System). Many types of fittings are also available upon request (SMS, DIN, CLAMP, RJT, ISS, FIL, GAS, NPT, JIC, FLANGES, etc.).

POLYURETHANE REINFORCED GECIFLEX PU/AL HOSE



100% translucent polyurethane polyester with stainless steel wire without halogens or plasticizers.

PRODUCT HIGHLIGHTS

- Extraction and transfer of powder, dust.
- High resistance to UV and ozone with a bend radius and great flexibility.

- Available from ND 32 to 200mm (1.3 to 8 inches).
- Working temperature range from -40 to +90°C (-40 to 194°F).
- Standard manufacturing length 10m (32.8 feet).

Phthalate free

FDA



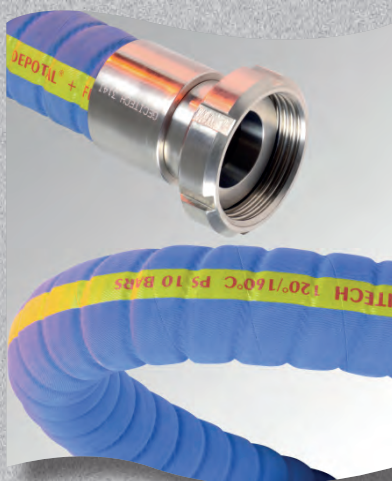
NRS

Assembly options

The 316L stainless steel swaged fittings are monoblocs (no welds) in accordance with the NRS® design (Non Retention System). Many types of fittings are also available upon request (SMS, DIN, CLAMP, RJT, ISS, FIL, GAS, NPT, JIC, FLANGES, etc.).

DEPOTAL ANNELE®

EPDM



White EDPM with synthetic reinforcement ply and steel wire. Outer surface corrugated blue EPDM rubber.

PRODUCT HIGHLIGHTS

- High flexibility for flow control panel, etc.
- Robust hose recommended for all types of food products except oily and fatty products.
- Ideal for resisting ground abrasion.
- Good vacuum capability.

- Available from ND 25 to 102mm (1 to 4 inches).
- Working pressure 10 bar (145 PSI).
- Working temperature range from -30 to +120°C (-22 to +248°F).
- Standard manufacturing length 40m (131 feet).

Phthalate free

FDA

BfR

Regulation 1935/2004



NRS

Assembly options

The 316L stainless steel swaged fittings are monoblocs (no welds) in accordance with the NRS® design (Non Retention System). Many types of fittings are also available upon request (SMS, DIN, CLAMP, RJT, ISS, FIL, GAS, NPT, JIC, FLANGES, etc.).

WINERY



White elastomer with nylon wire or galvanized steel wire and textile plies.
Outer surface red elastomer.

PRODUCT HIGHLIGHTS

- Ideal for resisting ground abrasion.
- Special for wineries applications.

Galvanized steel wire

- Available from ND 25 to 102mm (1 to 4 inches).
- Working pressure 10 bar (145 PSI).
- Working temperature range from -30 to +120°C (-22 to +248°F).
- Standard manufacturing length 40m (131 feet)

Nylon wire

- Available from ND 25 to 70mm (1 to 2.7 inches).
- Working pressure 10 bar (145 PSI).
- Working temperature range from -30 to +70°C (-22 to +158°F).
- Standard manufacturing length 40m (131 feet).



NRS



Reusable ferrules

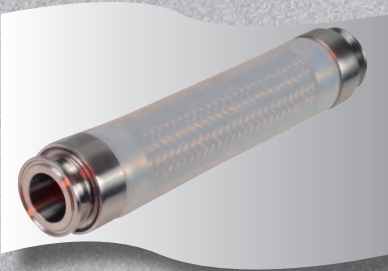
Assembly options

The 316L stainless steel swaged fittings are monoblocs (no welds) in accordance with the NRS® design (Non Retention System). The hose can be also supplied with fittings and reusable ferrules. Many types of fittings are also available upon request (SMS, DIN, CLAMP, RJT, ISS, FIL, GAS, NPT, JIC, FLANGES, etc.).

Phthalate
free

FDA

OUTER PROTECTION BY SILICONE SLEEVE



Extruded silicone sleeve translucent or white.

PRODUCT HIGHLIGHTS

- Facilitates the outer surface cleaning of the hose
- Allows the visualization of possible leak.
- Protects against dirt in the metal braid.
- Surface thermal protection.
- Finishing with stainless over-rings at both ends.

Phthalate
free

FDA

INSULATING HOSE



Insulating hose extruded elastomer foam.

PRODUCT HIGHLIGHTS

- Hose thermal protection, limits thermal shocks between inside and outside.
- Limits the temperature loss of the conveyed product.

- Working temperature range from -50 to +150°C (-58 to +302°F).

FIBREGLASS SLEEVE COATED WITH SILICONE



PRODUCT HIGHLIGHTS

- Operator protection against the hose temperature.
- Hose protection from ambient temperature.
- Finishing with stainless over-rings at both ends.

Complies with SAE AS1072 standard.

DOUBLE JACKET HOSE



Double jacket hose with water or air circulation. For inner product circulation and outer connection for the circulation of heating or cooling media.

PRODUCT HIGHLIGHTS

- Ideal to maintain temperature of the transferred liquid thanks to hot water, cold water or air circulation system.
- System used with all types of hoses.

Option:

- Double jacket hose with inside elastomer and outside stainless steel corrugated.
- Double jacket hose with inside/outside elastomer.

HEATED HOSE WITH ELECTRICAL WIRE

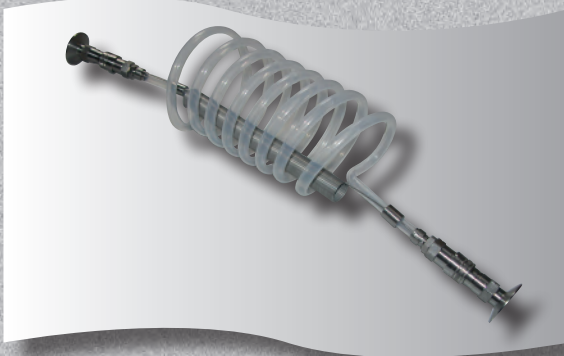


Flexible hose inside with heating electrical wire outside.

PRODUCT HIGHLIGHTS

- Maintains a consistent temperature thanks to the electrical flexible wire. Heated hose self-regulated with sensor PT100 or heated hose with external controller (contact us).
- Insulating foam.
- With outside silicone sleeve for easy cleaning.
- Finishing with stainless over-rings at both ends.

COIL



● Example of a PFA pneumatic coil used in pharmaceutical production room.

■ Products and materials on request.

CLEANING



Stainless steel hose reel used for cleaning operations in food industries.

PRODUCT HIGHLIGHTS

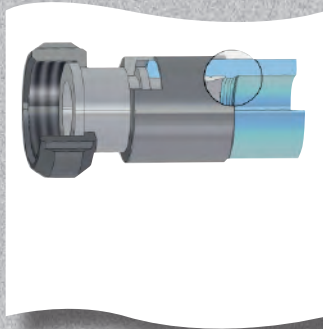
- Stainless steel hose reel with automatic spring return (Additional models available upon request).
- Ideal for washing facilities.
- Wall mounting.



The reel can be assembled with:

- Vaprocess® hose or blue PVC.
- Water guns: red, white, blue or stainless steel.
- Swivel connector and accessories.

SWAGED FITTING NRS® (Non retention System)



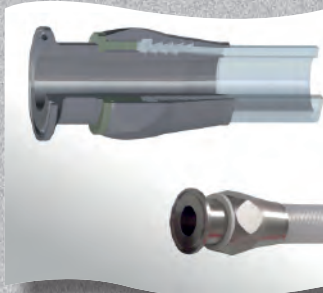
The swaged fitting NRS® can be assembled on all Gecitech hoses.

The fittings are manufactured to avoid diameter differences between the nipple and pipe in order to ensure a continuous flow of the transfer product. The swaged assembly brings a better non-retention safety by avoiding bacteria entrapment areas.

PRODUCT HIGHLIGHTS

- Bend connections 90° or 45°, as well as the special assemblies are manufactured with orbital type welding. All the straight connections are one part, without welding. The concept of assembly can be cleaned in place (CIP) without disassembling.
- Each flexible hose is tagged with a manufacturing code to allow the traceability and the follow-up quality of the flexible. In order to identify the transfer product, a colour identification can be added outside of the hose.
- The inside surface quality of the connections is smooth (roughness <math><0,8\mu</math>). Grinding or electro-polishing is also available upon request. After swaging, the outside of the ferrule is polished.
- The NRS® range can be assembled with all kinds of fittings (SMS, CLAMP, DIN, RJT, ISS, GAS, etc.).

VNRS® REUSABLE FITTING



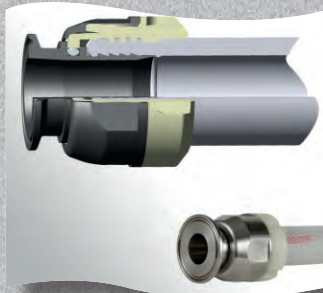
VNRS® reusable fitting in stainless steel 316L can be assembled on all our silicone Tressil® hoses.

PRODUCT HIGHLIGHTS

- This screw-on fitting allows assembly and disassembly without special tools and without galling (non-galling rings*). Can be cleaned with normal CIP procedure (Gecitech patented system).
- The connection hose/fitting is specially manufactured to avoid differences in diameter and to ensure a continuous flow of the transfer product.
- The VNRS® system avoids bacteriological gaps
- The VNRS® range can be assembled with all kinds of fittings (SMS, CLAMP, DIN, RJT, ISS, GAS, etc.).

*standard ring or autoclavable ring.

ASSEMBLY ON SITE FITTING MSP®

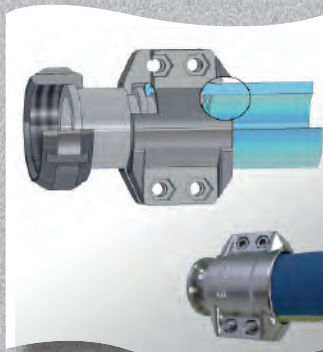


The assembly on site fitting MSP® is in stainless steel 316L and can be assembled on GSI® 75 NT and 75 NTP hoses range as well as Polysil® (on request).

PRODUCT HIGHLIGHTS

- The screw-on fitting allows a perfect compression and holding of the hose extremity, in addition to the locking of the ferrule into the fitting groove making it monobloc like a swaged system.
- To assure the best assembly, we propose an appropriate wrench.
- The MSP® range can be assembled with all kinds of fittings (SMS, CLAMP, DIN, RJT, ISS, GAS, etc.).

REUSABLE FERRULES

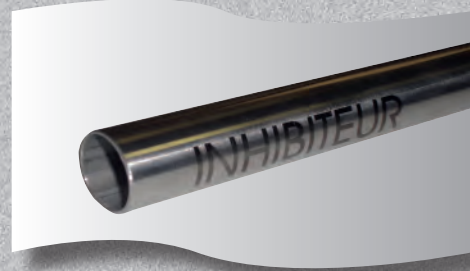


The reusable ferrules can be assembled on Depotal® and Nitrifood® hoses range.

PRODUCT HIGHLIGHTS

- The assembly is easy and fast, made with two half stainless steel or aluminium ferrules with screws and nuts.
- Perfect for maintenance service, these reusable ferrules avoid production down-time with quick repair.
- The reusable ferrules range can be assembled with all kinds of fittings (SMS, CLAMP, DIN, RJT, ISS, GAS, etc.).

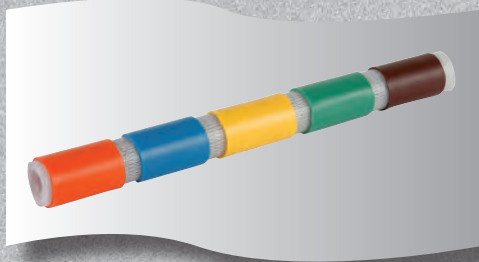
LASER MARKING



Example of customer marking.

GECITECH has a high performance laser marking equipment which offers many identification possibilities.

COLOUR TRACKING



Colour identification by extruded silicone sleeve or shrinkable sleeve. This system allows the hose identification by area of use or by products being transferred.

HOSES CLEANING



GECITECH uses a cleaning station using softened hot water, rinsing with reverse osmosis water, and drying by filtered hot air circulation. This cleaning possibility is optional on request.

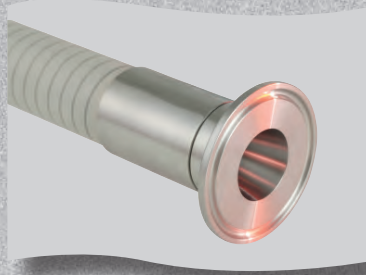
QUALITY SERVICES

- GECITECH offers material certification type 2.0 and 3.1.
- GECITECH offers three levels of traceability procedures: standard, high and ultra-high depending on customers' needs.
- Electro polishing.
- Roughness: 0.8 μ standard and up to 0.1 μ on request.
- Welds made by our operators are validated NF EN 287-1.
- Bench pressure test report.
- Hoses endoscopy video.

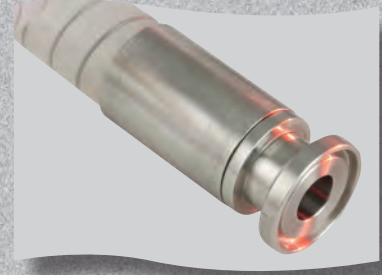
316L stainless steel fittings (Other materials on request)



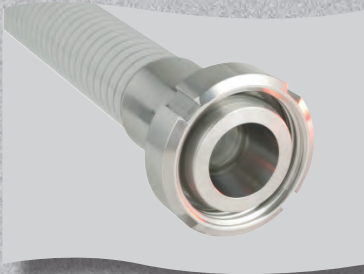
SMS



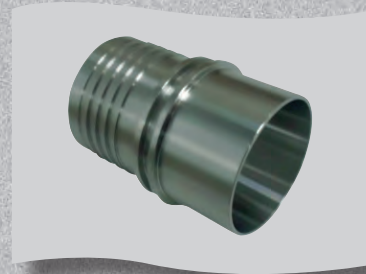
CLAMP SMS, IDF, ISO, Imperial, Metric



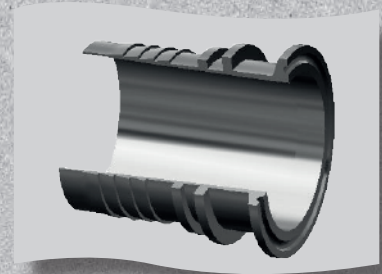
Micro and mini clamp



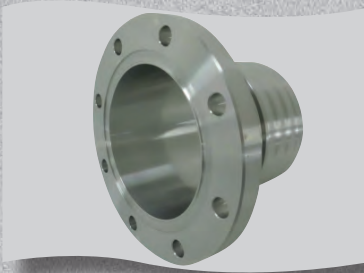
**DIN 11851 11864-1A
11864-1B**



Welding end fitting



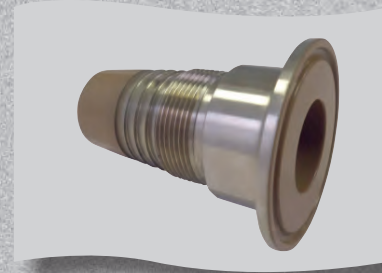
ASME BPE clamp



Flange



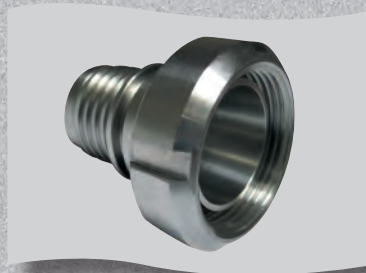
Cam lock fitting



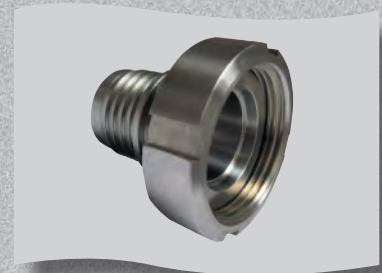
PTFE coating



**Symetrical Guillemin
fitting**

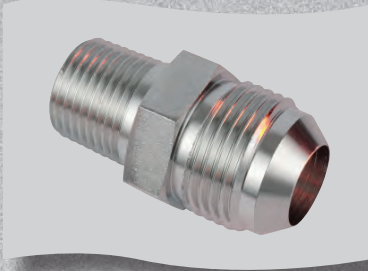


Macon coupling



RJT

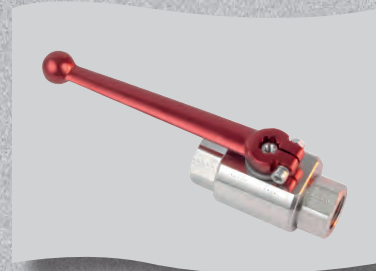
316L stainless steel fittings (Other materials on request)



JIC



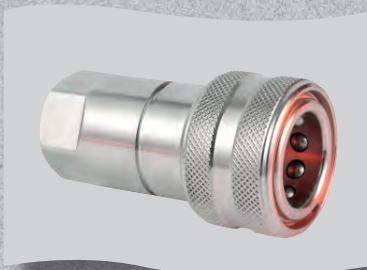
JIC BSP adaptor



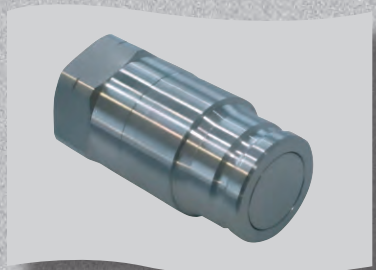
Valve



Inert coupling



Quick release coupling



Flatface coupling



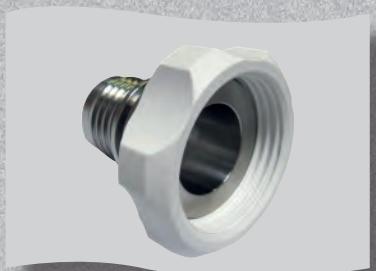
Clamp ring



Bends and reductions



Protection ring



Easy screwing nut



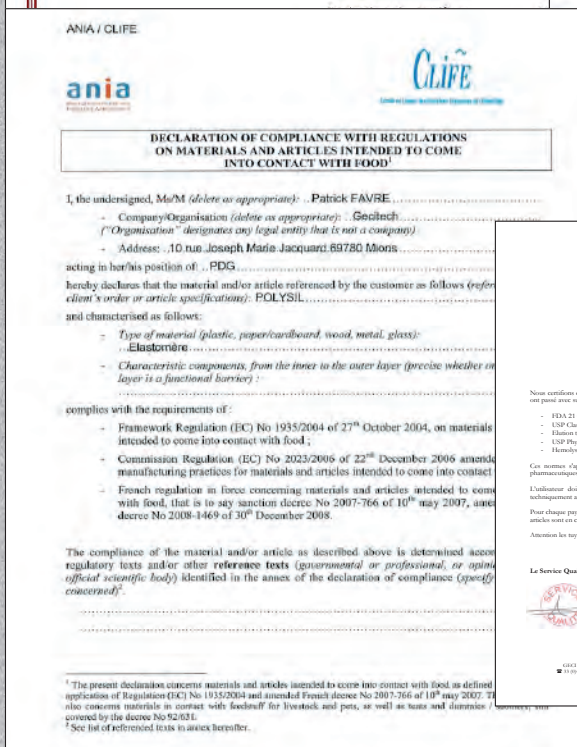
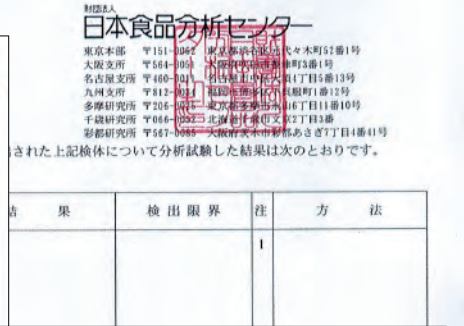
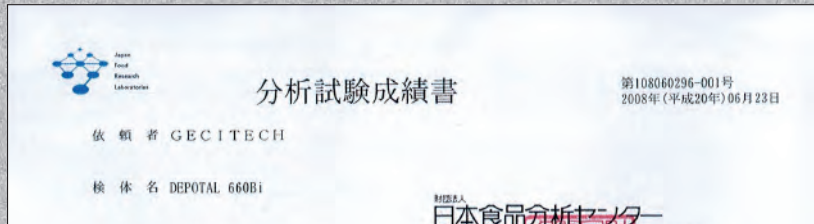
Specially designed part



Specially designed part

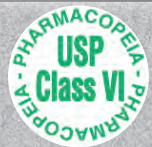
All parts of our production are unitary tagged with the production batch number.

Certifications recognized at national and international level.



CERTIFICATIONS

Compliance with all operating standards





Our cleanroom:
700m² in a
controlled
atmosphere area for
the silicone hoses
production



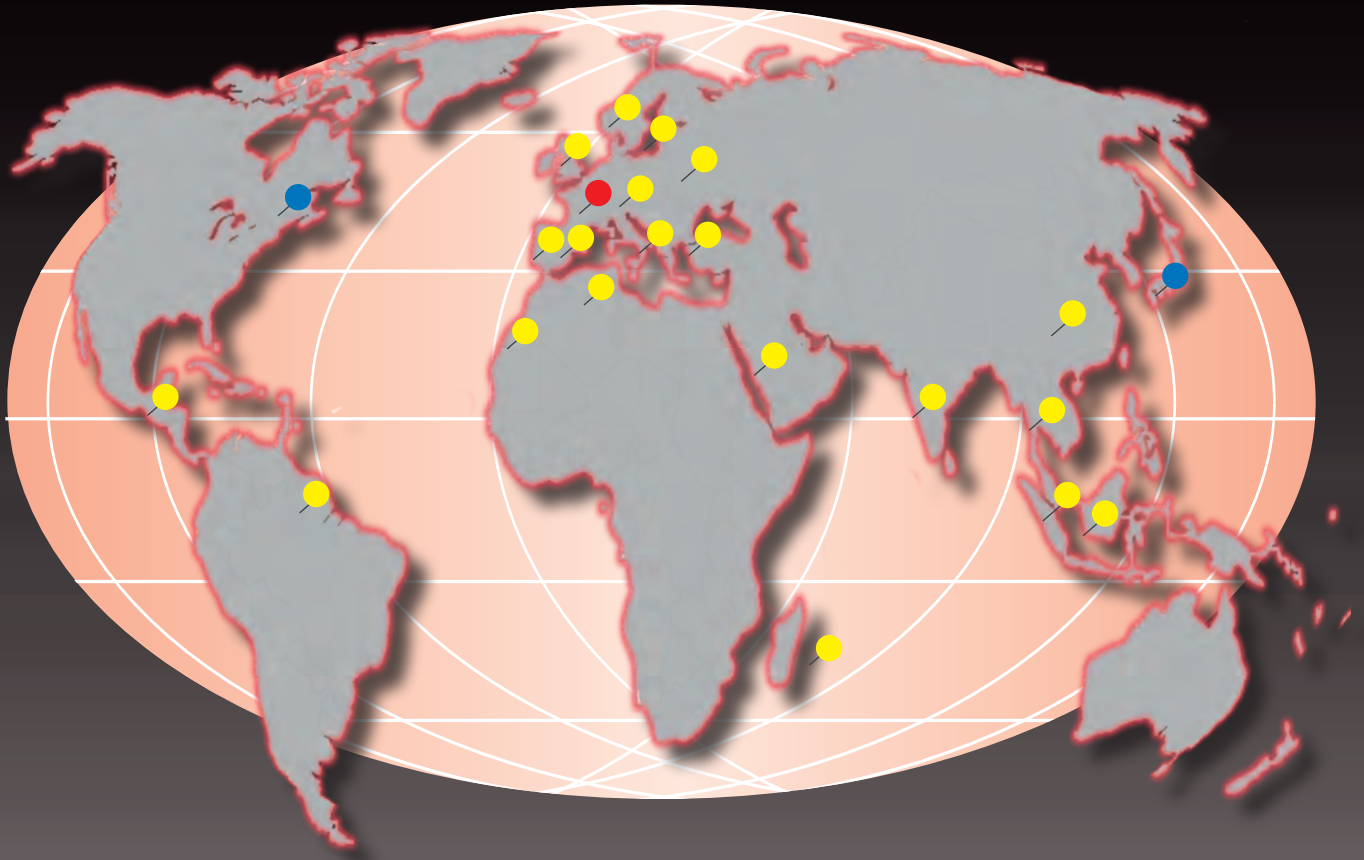
Stainless
steel fittings
production



Assembly
room equipped
with the latest
technologies



Cleaning
station using
reverse
osmosis water



- Distributor
- Subsidiary / assembly
- Head office / production

www.gecitech.com



Christian Berner Oy • p.09 2766 830 • infofi@christianberner.com • www.christianberner.fi