






# Isotop® SD

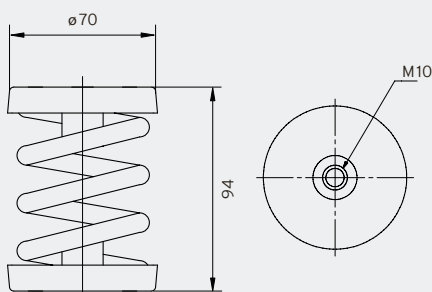
## Steel spring isolators

- Natural frequency from 3.2Hz
- Electro-galvanised or cathodic dip-coated (CDC) for increased corrosion protection
- Secure connection between the plate and the spring thanks to special adhesive
- M10 internal thread
- Suitable base plate and/or height adjustment available
- Base plate with damping element (FP/K) also isolates higher frequencies
- Simple load control thanks to open design
- Spring design conforms to DIN EN 13906-1

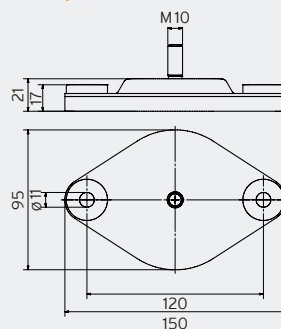
		Maximum load		Natural frequency at maximum load	Packaging unit	Order number
		in kg	in N			
<b>SD spring element galvanised</b> 	Isotop® SD 1	20	196	3.4 Hz	50 pcs.	<b>39443</b>
	Isotop® SD 2	33	324	3.4 Hz	50 pcs.	<b>39444</b>
	Isotop® SD 3	52	510	3.4 Hz	50 pcs.	<b>39003</b>
	Isotop® SD 4	82	804	3.4 Hz	50 pcs.	<b>39455</b>
	Isotop® SD 5	123	1,206	3.4 Hz	50 pcs.	<b>39004</b>
	Isotop® SD 6	195	1,913	3.4 Hz	50 pcs.	<b>39456</b>
	Isotop® SD 7	310	3,041	3.4 Hz	50 pcs.	<b>39457</b>
	Isotop® SD 8	420	4,120	3.4 Hz	50 pcs.	<b>39458</b>
	Isotop® SD 9	525	5,150	3.4 Hz	50 pcs.	<b>39459</b>
<b>SD spring element CDC</b> 	Isotop® SD 1 CDC	20	196	3.4 Hz	100 pcs.	<b>39460</b>
	Isotop® SD 2 CDC	33	324	3.4 Hz	100 pcs.	<b>39461</b>
	Isotop® SD 3 CDC	52	510	3.4 Hz	50 pcs.	<b>39462</b>
	Isotop® SD 4 CDC	82	804	3.4 Hz	50 pcs.	<b>39463</b>
	Isotop® SD 5 CDC	123	1,206	3.4 Hz	50 pcs.	<b>39464</b>
	Isotop® SD 6 CDC	195	1,913	3.4 Hz	50 pcs.	<b>39465</b>
	Isotop® SD 7 CDC	310	3,041	3.4 Hz	50 pcs.	<b>39466</b>
	Isotop® SD 8 CDC	420	4,120	3.4 Hz	100 pcs.	<b>39467</b>
	Isotop® SD 9 CDC	525	5,150	3.4 Hz	100 pcs.	<b>39468</b>
<b>Base plate FP/K with damping element for SD/DSD</b> 	Isotop® FP/K 1-9		for SD 1 to 9	including screws <sup>1</sup>	50 pcs.	<b>38216</b>
	Isotop® FP/K 1-9 CDC		for SD 1 to 9	including screws <sup>1</sup>	50 pcs.	<b>39158</b>
<b>Base plate FP for SD/DSD</b> 	Isotop® FP 1-9		for SD 1 to 9	without screws	50 pcs.	<b>39536</b>
	Isotop® FP 1-9 CDC		for SD 1 to 9	without screws	50 pcs.	<b>39537</b>
<b>Height adjustment for SD/DSD</b> 	Isotop® NV 1-9	M10	for SD 1 to 9		1 set (= 4 pcs.)	<b>39535</b>

<sup>1</sup> M10 connecting screws between base plate and spring

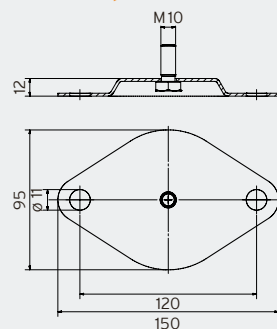
### Isotop® SD (unladen)



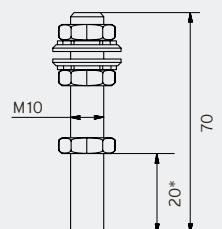
### Isotop® FP/K



### Isotop® FP



### Isotop® NV 1-9



\*Thread reach SD/DSD

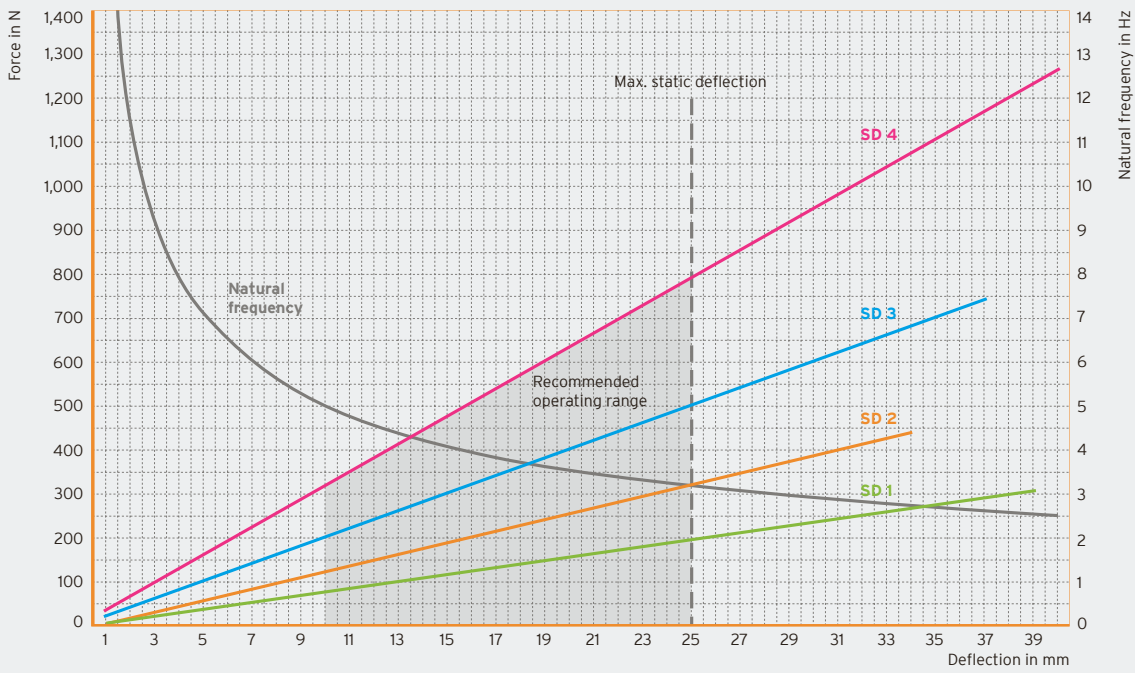


Bearing of belt-driven fans

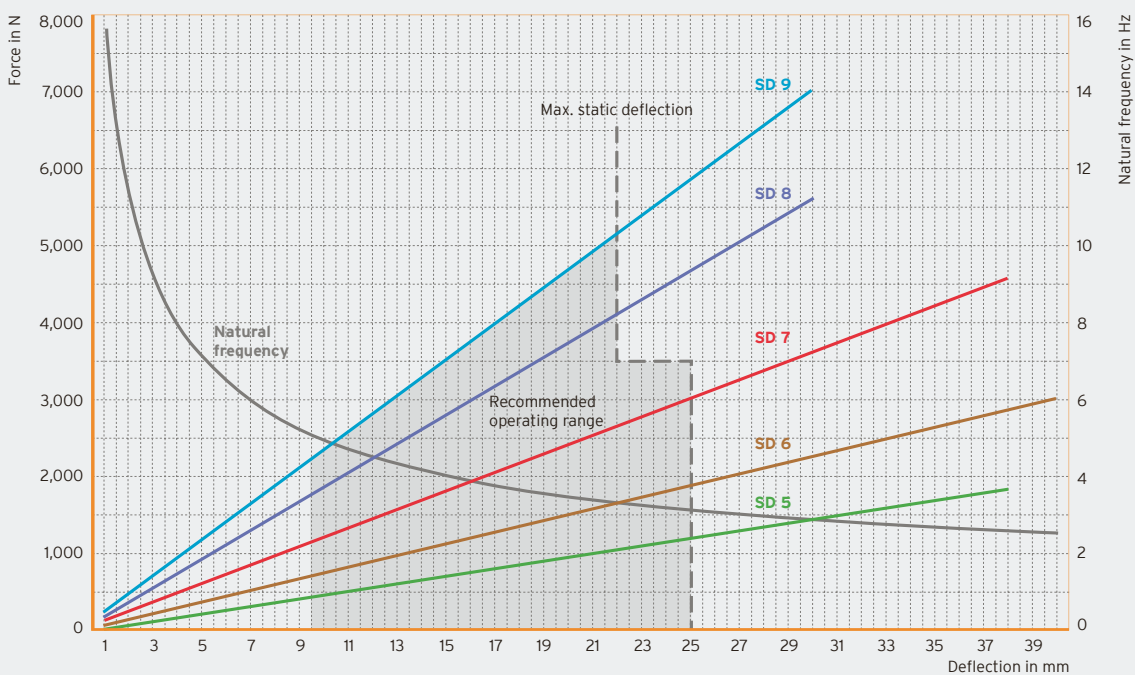


Industrial heat pump

**Isotop® SD 1– SD 4**



**Isotop® SD 5– SD 9**



Ota yhteyttä: Christian Berner Oy +358 9 2766 830 • infofi@christianberner.com • www.christianberner.fi

AUSTRIA – Bürs GERMANY – Berlin – Munich – Stuttgart FRANCE – Lyon JORDAN – Amman  
 JAPAN – Tokyo INDIA – Pune CHINA – Beijing USA – Charlotte [www.getzner.com](http://www.getzner.com)

**getzner**  
 engineering a quiet future

DB Isotop® en © Copyright by Getzner Werkstoffe GmbH 05/2020 | All information and data is based on our current knowledge. The data can be applied for calculations and as guidelines, are subject to typical manufacturing tolerances and are not guaranteed. Material properties as well as their tolerances can vary depending on type of application or use and are available from Getzner on request. Further information can be found in VDI Guideline 2062 (Association of German Engineers) as well as in glossary. Further characteristic values on request.